

JUNO VALENTINE

AND THE FANTASTIC FASHION ADVENTURE

ACTIVITY KIT!



HELP JUNO CATCH HER BROTHER, FINN!

Juno needs to find her brother, Finn, before he makes a major mess in the Magical Hall of Shoes.
Help guide Juno through the maze to find Finn before School Picture Day arrives!



JUNO VALENTINE AND THE FANTASTIC FASHION ADVENTURE BY EVA CHEN • ILLUSTRATED BY DEREK DESIERTO

FEIWEL & FRIENDS • AN IMPRINT OF OF MACMILLAN CHILDREN'S PUBLISHING GROUP

FANTASTIC WORD SEARCH

Help Juno Valentine complete her Fantastic Word Search! Can you find all of the words below?

BANANAS AUDREY HEPBURN SHOES ANNIE OAKLEY
PIRATE MAP MICHELLE OBAMA SIMONE BILES BANDANNA FINN

G	I	E	O	U	A	S	A	N	A	N	A	B	E	Y	U	E	B	S
Q	A	T	T	C	E	K	L	C	M	P	Y	A	R	V	T	Y	U	I
A	K	R	P	L	E	O	I	E	R	D	T	Q	W	I	S	S	M	M
U	H	W	P	I	R	A	T	E	W	E	I	R	S	M	M	U	U	O
D	E	S	Q	W	X	R	E	T	Y	L	L	O	C	I	D	Y	N	N
R	G	M	E	O	T	A	I	Z	E	E	D	O	L	C	D	P	G	E
E	A	H	L	I	G	K	S	P	F	G	H	S	A	H	V	F	H	B
Y	T	I	E	S	C	P	H	I	A	A	M	T	M	E	G	D	J	I
H	W	S	J	Z	I	O	J	G	N	Z	P	E	S	L	I	C	U	L
E	R	P	H	M	G	C	I	A	N	U	R	R	I	L	L	B	K	E
P	O	D	O	O	J	S	O	R	I	S	E	A	P	E	Y	N	M	S
B	O	W	I	B	E	Y	T	Y	E	T	S	K	H	O	G	J	P	V
U	K	R	D	O	S	S	S	G	O	A	I	E	R	B	M	O	I	G
R	C	L	M	L	T	Z	T	E	A	R	D	A	A	A	E	P	F	I
N	A	I	I	A	P	G	S	S	K	N	E	S	E	M	O	I	I	L
D	E	Z	V	A	P	N	L	T	L	I	N	E	G	A	M	E	N	Y
S	A	C	Q	D	U	E	T	R	E	E	T	M	Z	N	O	C	N	G
K	I	I	I	E	C	N	B	I	Y	Y	O	N	O	Y	N	E	X	B
R	M	E	D	P	Y	U	A	N	N	A	D	N	A	B	K	V	M	N

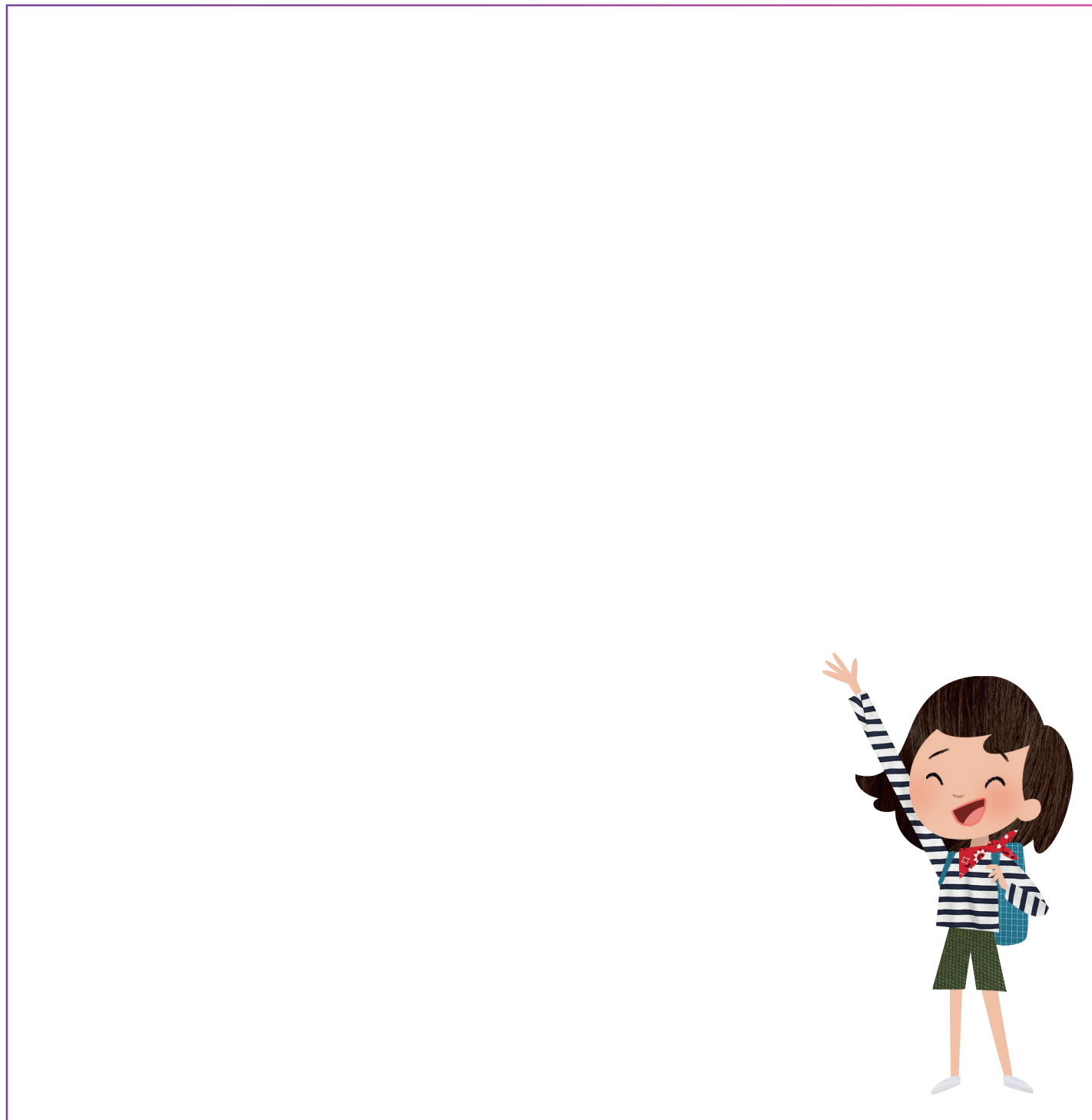


JUNO VALENTINE AND THE FANTASTIC FASHION ADVENTURE BY EVA CHEN • ILLUSTRATED BY DEREK DESIERTO

FEIWEL & FRIENDS • AN IMPRINT OF OF MACMILLAN CHILDREN'S PUBLISHING GROUP

DESIGN JUNO'S SCHOOL PICTURE DAY OUTFIT!

Juno needs your help designing a School Picture Day outfit. Draw in the space below to make the perfect look!



JUNO VALENTINE AND THE FANTASTIC FASHION ADVENTURE BY EVA CHEN • ILLUSTRATED BY DEREK DESIERTO

FEIWEL & FRIENDS • AN IMPRINT OF OF MACMILLAN CHILDREN'S PUBLISHING GROUP

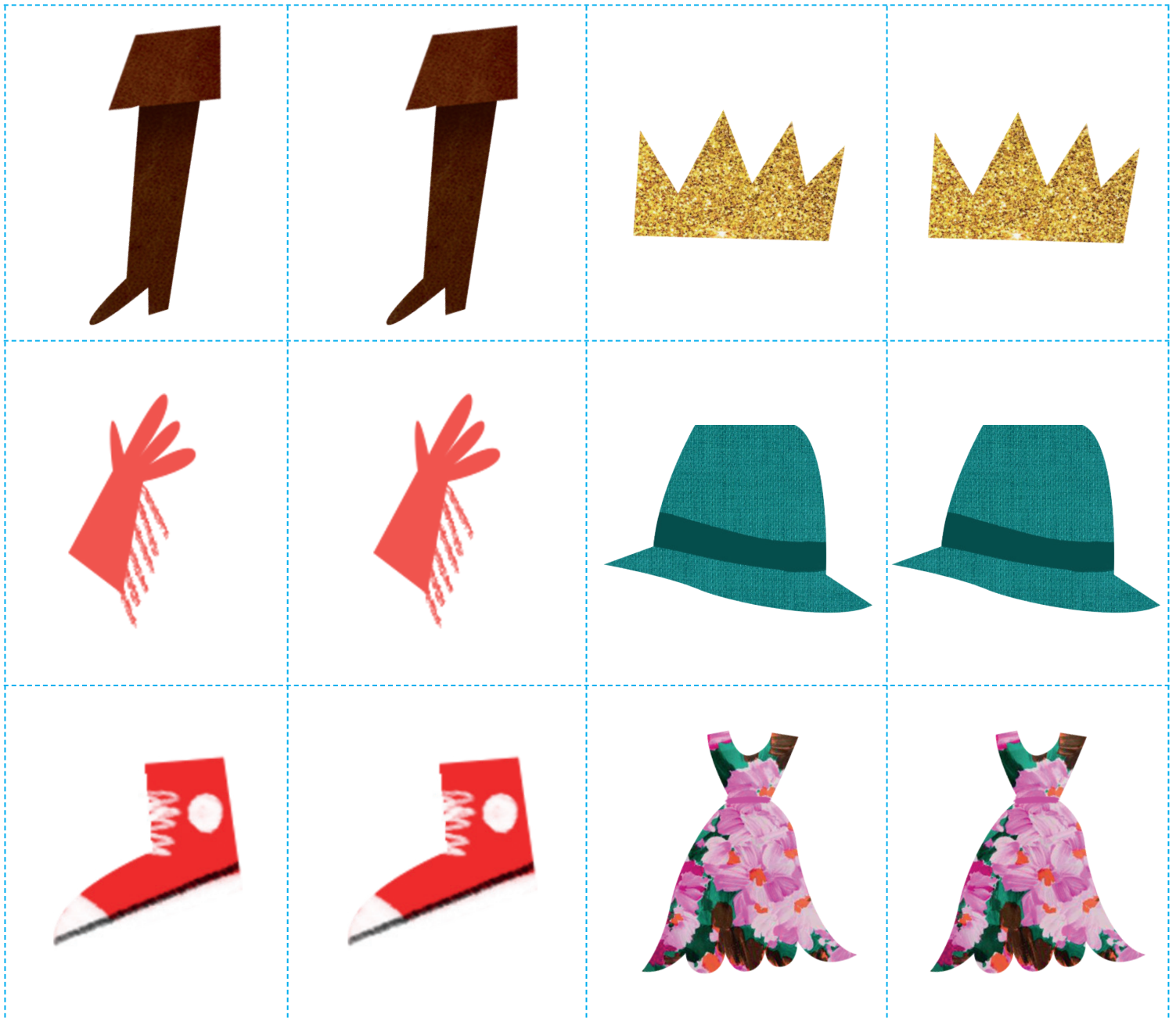
MAGICAL MATCHING GAME!

To play, have a grown-up help cut out all of the cards, mix them up, and lay them facedown.

Taking turns, players flip over two cards. If the cards match, you have made a pair!

Keep those cards. If they don't match, turn them back over and the next player gets a turn.

When all the pairs have been found, the player with the most cards wins!



JUNO VALENTINE AND THE FANTASTIC FASHION ADVENTURE BY EVA CHEN • ILLUSTRATED BY DEREK DESIERTO

FEIWEL & FRIENDS • AN IMPRINT OF OF MACMILLAN CHILDREN'S PUBLISHING GROUP